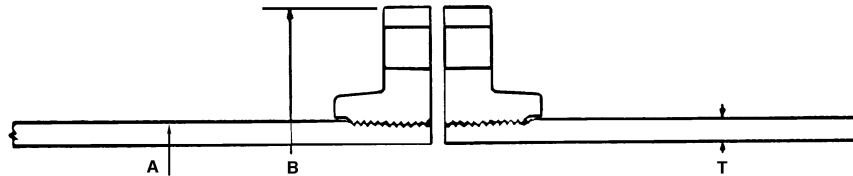


DUCTILE IRON FLANGED JOINT PIPE

Meets all Requirements of ANSI/AWWA-C115/A21.15 Standard
 Pipe Barrel Meets all Requirements of ANSI/AWWA-C151/A21.51 Standard



FLANGED JOINT PIPE

Clow Flanged Joint Ductile Iron pipe is manufactured for water, steam, sewage, oil and other fluid lines where rigid joints are required. Flanged pipe is available in lengths up to 17'-6" maximum. Ductile flanged pipe is made in accordance with ANSI/AWWA C115/A21.15 and has a pipe wall thickness that provides for adequate metal under the threads.

The bolt circle and bolt holes of the flanges conform to class 125 flanges shown in ANSI B16.1 and can be joined with Class 125 B16.1 or Class 150 ANSI B16.5 (steel) flanges. For connecting to B16.1, Class 250 flanges on fittings or valves, use the Flange Adaptor on page 71.

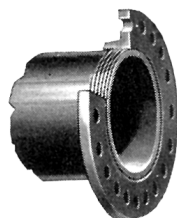
THIS PIPE SHOULD NOT BE THREADED OR FLANGED IN THE FIELD.

Nominal Inside Diameter Inches	Thick Class	Rated Working Pressure psi	Dimensions Inches			Approximate Weight Pounds		
			T Thickness	A Pipe O.D.	B Flange O.D.	One Flange Only	Pipe Barrel Per Ft.	17'-6" Length* With Flanges
3	53	250	.31	3.96	7.50	7	10.9	205
4	53	250	.32	4.80	9.00	13	13.8	268
6	53	250	.34	6.90	11.00	17	21.4	409
8	53	250	.36	9.05	13.50	27	30.1	581
10	53	250	.38	11.10	16.00	38	39.2	762
12	53	250	.40	13.20	19.00	58	49.2	977
14	53	250	.42	15.30	21.00	72	60.1	1196
16	53	250	.43	17.40	23.50	90	70.1	1407
18	53	250	.44	19.50	25.00	90	80.6	1590
20	53	250	.45	21.60	27.50	115	91.5	1831
24	53	250	.47	25.80	32.00	160	114.4	2322
30	53	250	.51	32.00	38.75	240	154.4	3182
36	53	250	.58	38.30	46.00	350	210.3	4380

*Calculated weight of full length pipe is rounded off to nearest five pounds. Pipe is also available in 18' lengths.

Foundry Practice

Power tightening the long hub flanges and refacing across the face of the flange and the end of the pipe allows the gasket to seat over the machined ends of the pipe to be joined. Thus, threads are not subjected to line pressure nor possible corrosive action of line contents. Pipe threads not engaged by the flange itself are covered by the long hub of the flange. A tolerance of plus or minus 1/8 inch shall be allowed on all face to face dimensions of both full length and short length flanged pipe.



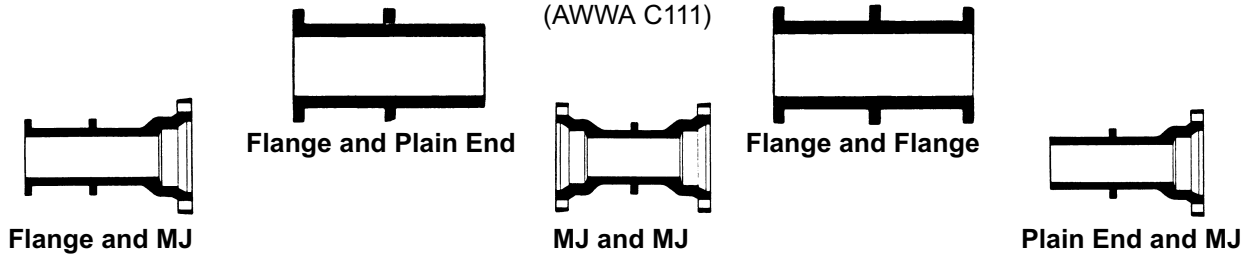
Cut-away of assembled flange



Screw Flange

The Screw Flange is a special flange tapped for ductile iron pipe to outside diameters shown above with bolt holes in accordance with ANSI B16.1 125 pound template. Flanges of ductile iron will always be furnished when ductile iron pipe is ordered. Flange accessories must be ordered separately.

FLANGED AND MECHANICAL JOINT WALL PIPE *



Pipe Size Inches	Pressure Rating psi		Minimum Overall Length* Inches			Body Thickness Inches	Wall Collar O.D. Inches
	Ductile		Flange and Flange	Flange and MJ	MJ and MJ		
	Flange / Plain Flange / Flange / MJ	MJ / MJ Plain End / MJ					
3	250	350	7	8	10	.48	7.00
4	250	350	7	9	10	.52	8.00
6	250	350	7	9	10	.55	10.00
8	250	350	8	9	10	.60	12.50
10	250	350	8	9	10	.68	14.50
12	250	350	8	9	10	.75	16.50
14	250	350	10	11	12	.66	19.50
16	250	350	10	11	12	.70	21.75
18	250	350	11	12	12	.75	23.75
20	250	350	11	12	12	.80	25.75
24	250	350	11	12	12	.89	30.25
30	250	250	10	12	16	1.03	36.25
36	250	250	10	12	21	1.15	43.4

*Wall pipe can be furnished in varied lengths. Check for minimum and maximum available length.
 Note: Order must specify if plain end is to socket in a Mechanical Joint or Push-on bell.

Pipe Size Inches	Flange Dimensions ††			MJ Dimensions †			Approximate Weight Pounds			
	Flange O.D.	Studs		Bell O.D.	Studs	No. Req'd.	Barrel per Inch	One Flange	One MJ Bell	Wall Collar
		Size	No. Req'd.							
3	7.50	5/8 x 2 1/4	4	7.69	5/8 x 3	4	1.37	6	11	4
4	9.00	5/8 X 2 1/2	8	9.12	3/4 x 3 1/2	4	1.90	10	16	5
6	11.00	3/4 x 3	8	11.12	3/4 x 3 1/2	6	2.94	13	23	6
8	13.50	3/4 x 3	8	13.37	3/4 x 3 1/2	6	4.27	21	31	9
10	16.00	7/8 x 3 1/4	12	15.69	3/4 x 3 1/2	8	5.96	28	41	10
12	19.00	7/8 x 3 1/4	12	17.94	3/4 x 3 1/2	8	7.81	43	51	12
14	21.00	1 x 3 3/4	12	20.31	3/4 x 4	10	7.89	54	79	26
16	23.50	1 x 3 3/4	16	22.56	3/4 x 4	12	9.55	67	97	30
18	25.00	1 1/8 x 4 1/4	16	24.83	3/4 x 4	12	11.48	70	117	33
20	27.50	1 1/8 x 4 1/4	20	27.08	3/4 x 4	14	13.60	89	140	35
24	32.00	1 1/4 x 4 1/2	20	31.58	3/4 x 4	16	18.11	123	185	45
30	38.75	1 1/4 x 5	28	39.12	1 x 4 1/2	20	26.11	184	315	50
36	46.00	1 1/2 x 9	32	46.00	1 x 5	24	34.19	275	580	78

NOTE: Wall Pipe may be statically cast, with integral water-stop collars, or fabricated, with welded water-stop collars at our option unless otherwise specified. **The above data are for statically cast wall pipe.**

† MJ Bells are furnished complete with standard joint accessories (page 6). Order must specify if bells are to be tapped for studs. Bells not tapped for studs are furnished with T-Head Bolts and nuts to the number and size indicated on page 6.

†† Order must specify if flanges are to be drilled or tapped for studs. Unless specified otherwise, flanges will be furnished to 125 pound template.

Flanges or MJ Bells ordered tapped for studs may be tapped between existing standard bolt holes unless specified otherwise.